



34 Elysian Street  
Openshaw, Manchester, M11 2GH  
Asking Price £115,000



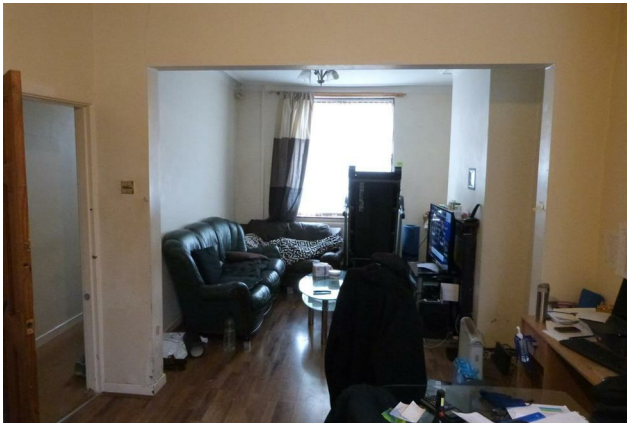


34 Elysian Street, Openshaw, Manchester, M11 2GH

CASH BUY ONLY. ATTENTION INVESTORS! BEING SOLD WITH NO ONWARD CHAIN!!

L A Property Discovery are proud to market this two double bedroom mid-terrace house which boasts a large open plan living room and dining area, gas central heating, bathroom, views of park to the front and a private rear garden. This property is perfect for a buy-to-let investment offering income potential or a family looking to put their own stamp on their home.

Close to local shops, schools and transport links. Be sure to book viewings ASAP to avoid disappointment.

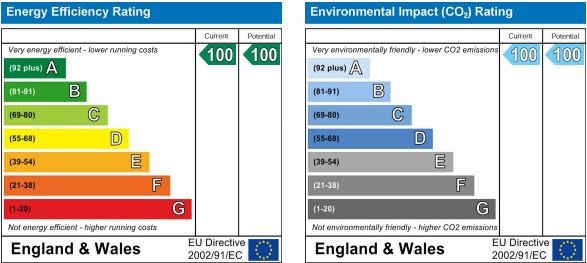


Area Map



Floor Plan

Energy Efficiency Graph



These particulars, whilst believed to be accurate are set out as a general outline only for guidance and do not constitute any part of an offer or contract. Intending purchasers should not rely on them as statements of representation of fact, but must satisfy themselves by inspection or otherwise as to their accuracy. No person in this firms employment has the authority to make or give any representation or warranty in respect of the property.